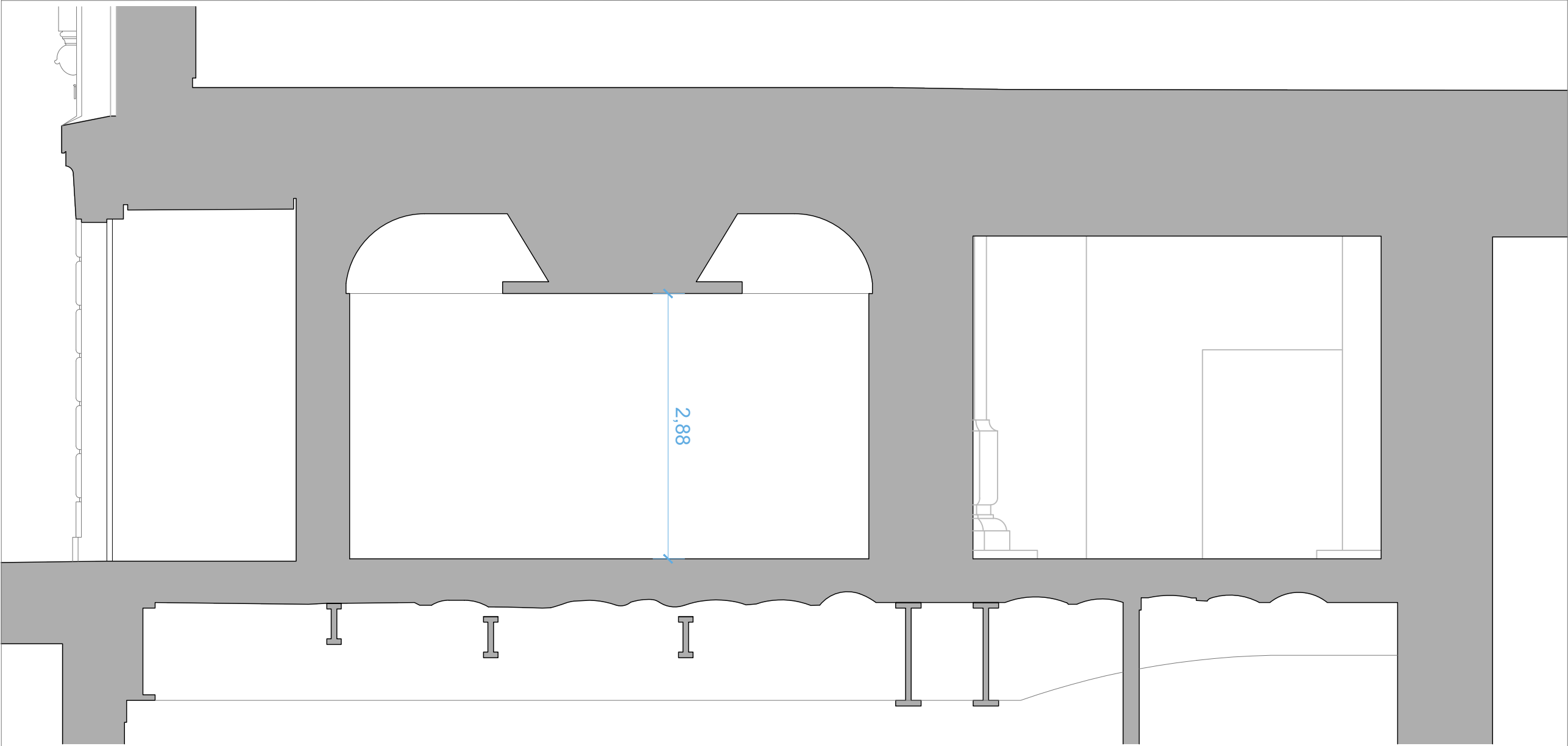
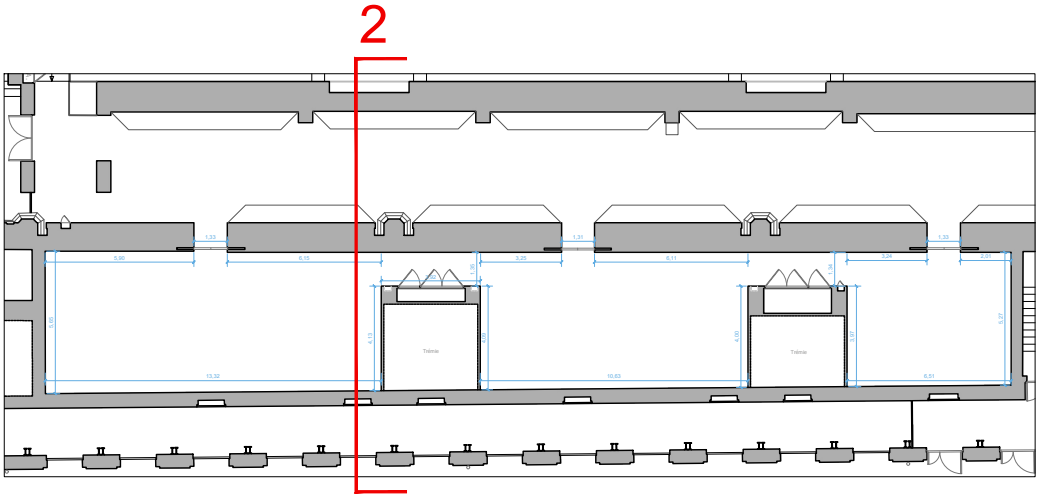


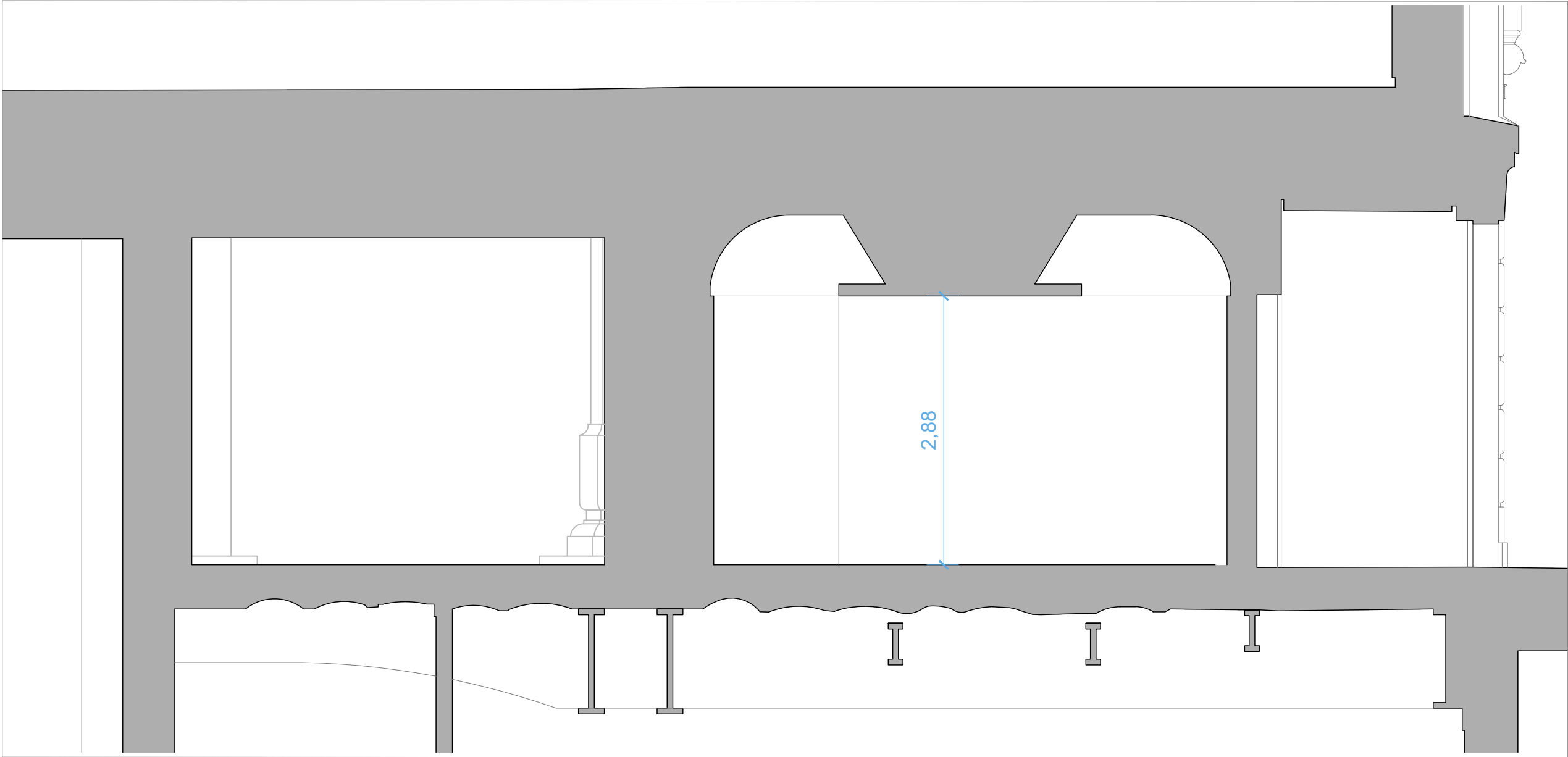
LOCALISATION



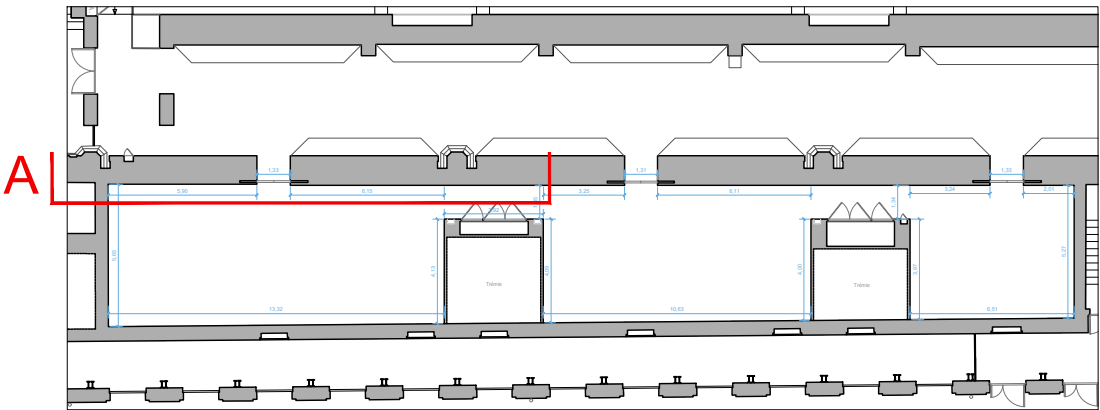
COUPE 1



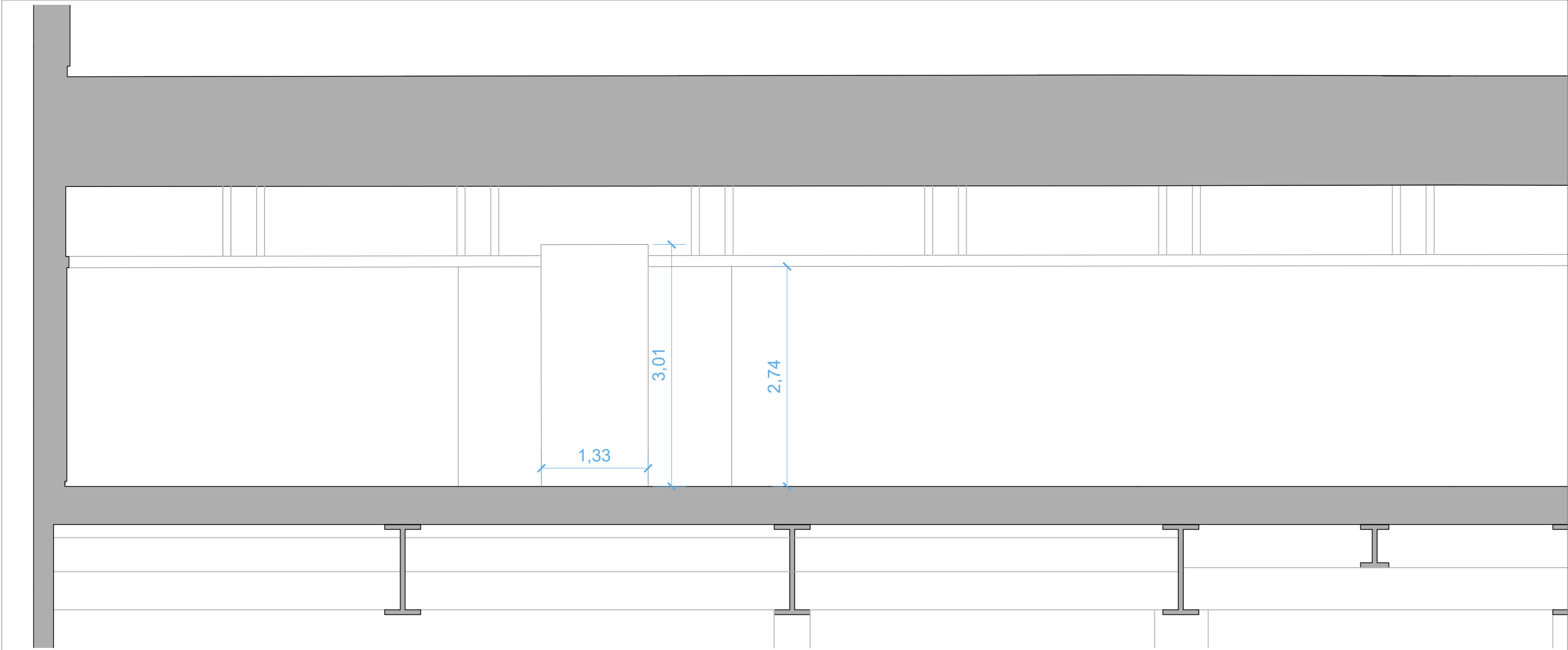
LOCALISATION



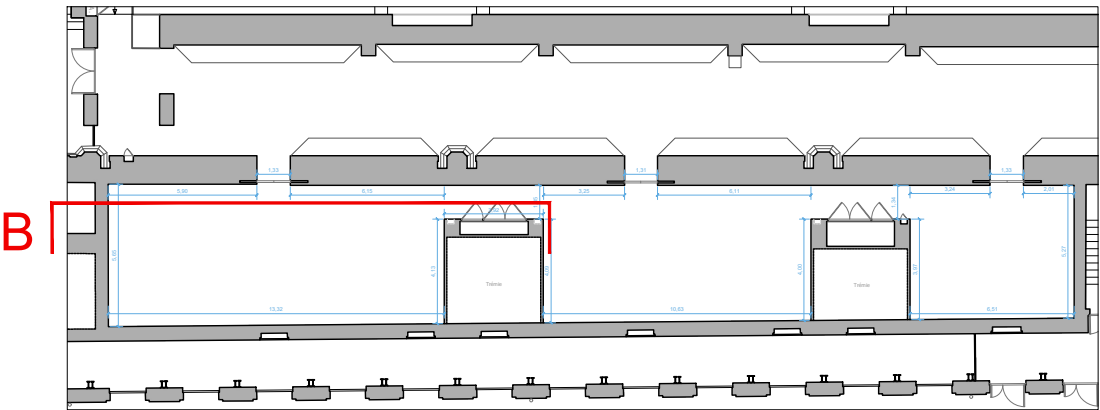
COUPE 2



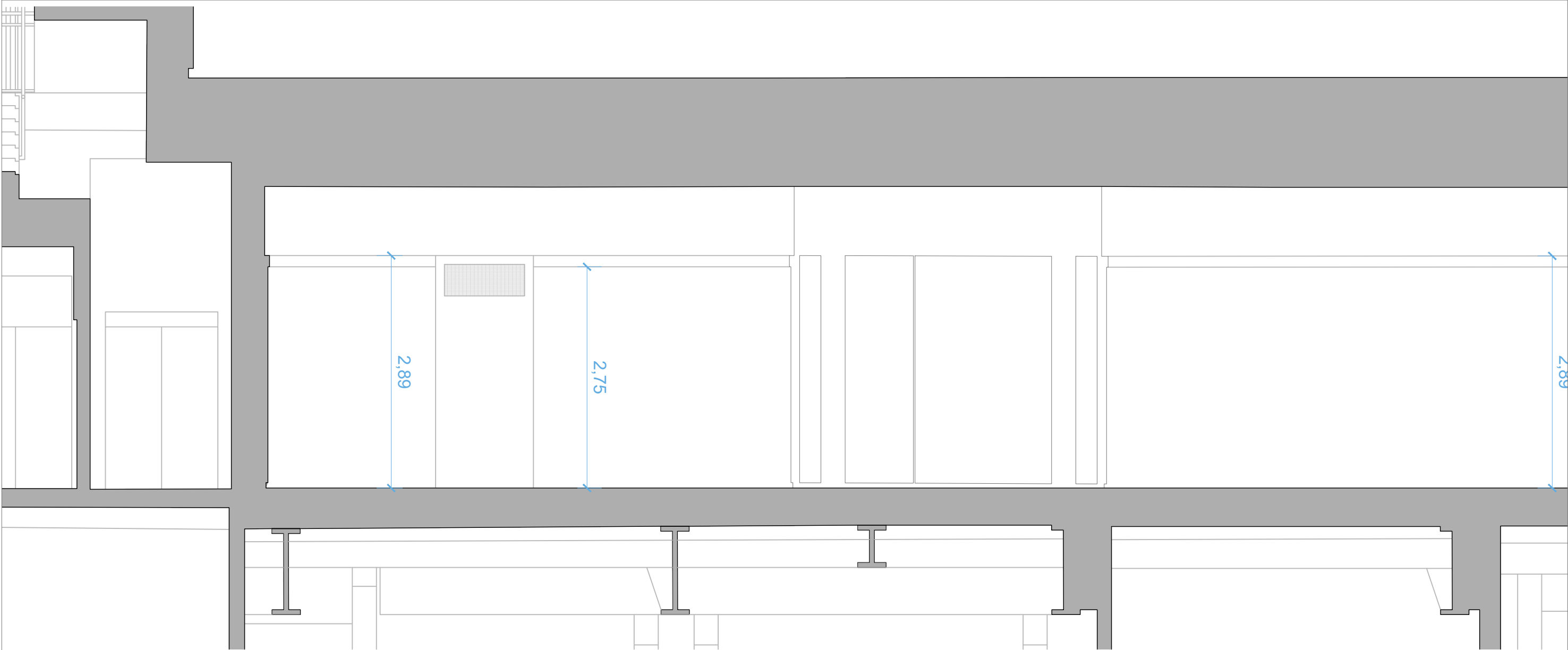
LOCALISATION



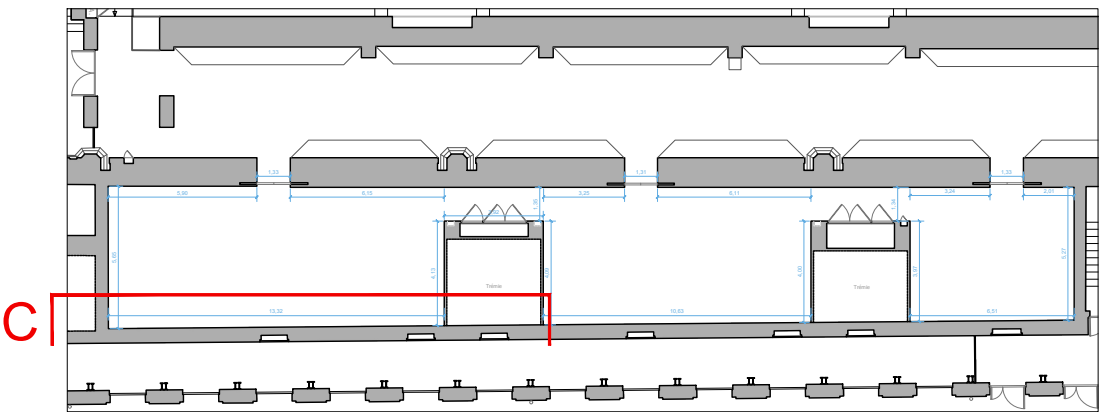
COUPE A



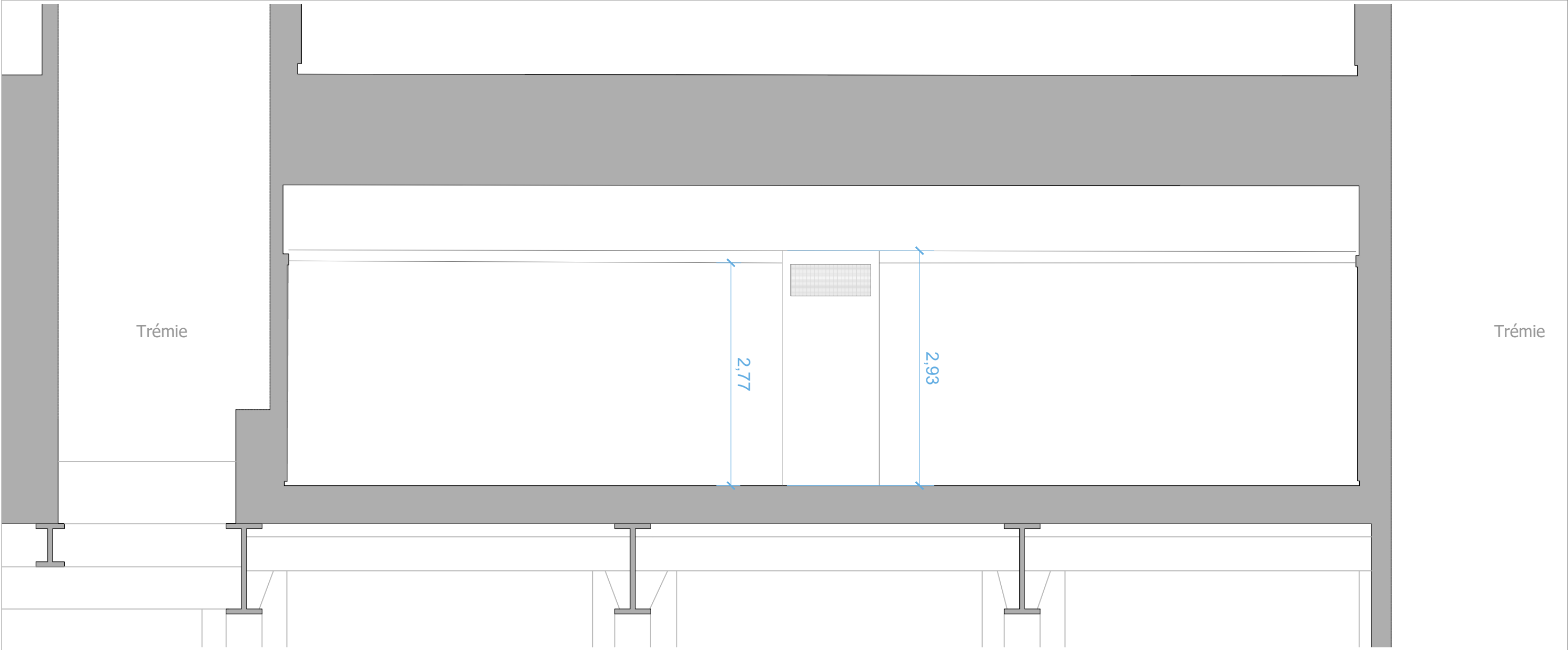
LOCALISATION



COUPE B

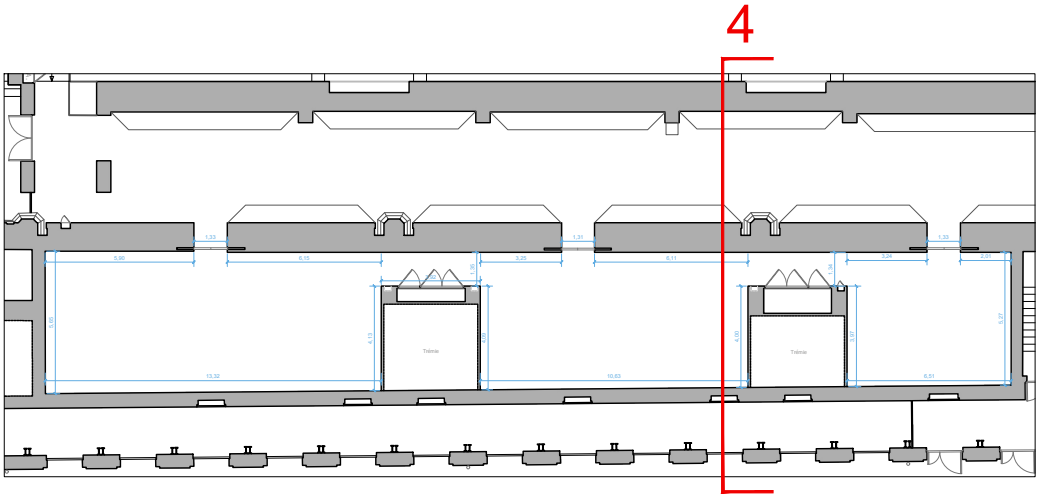


LOCALISATION

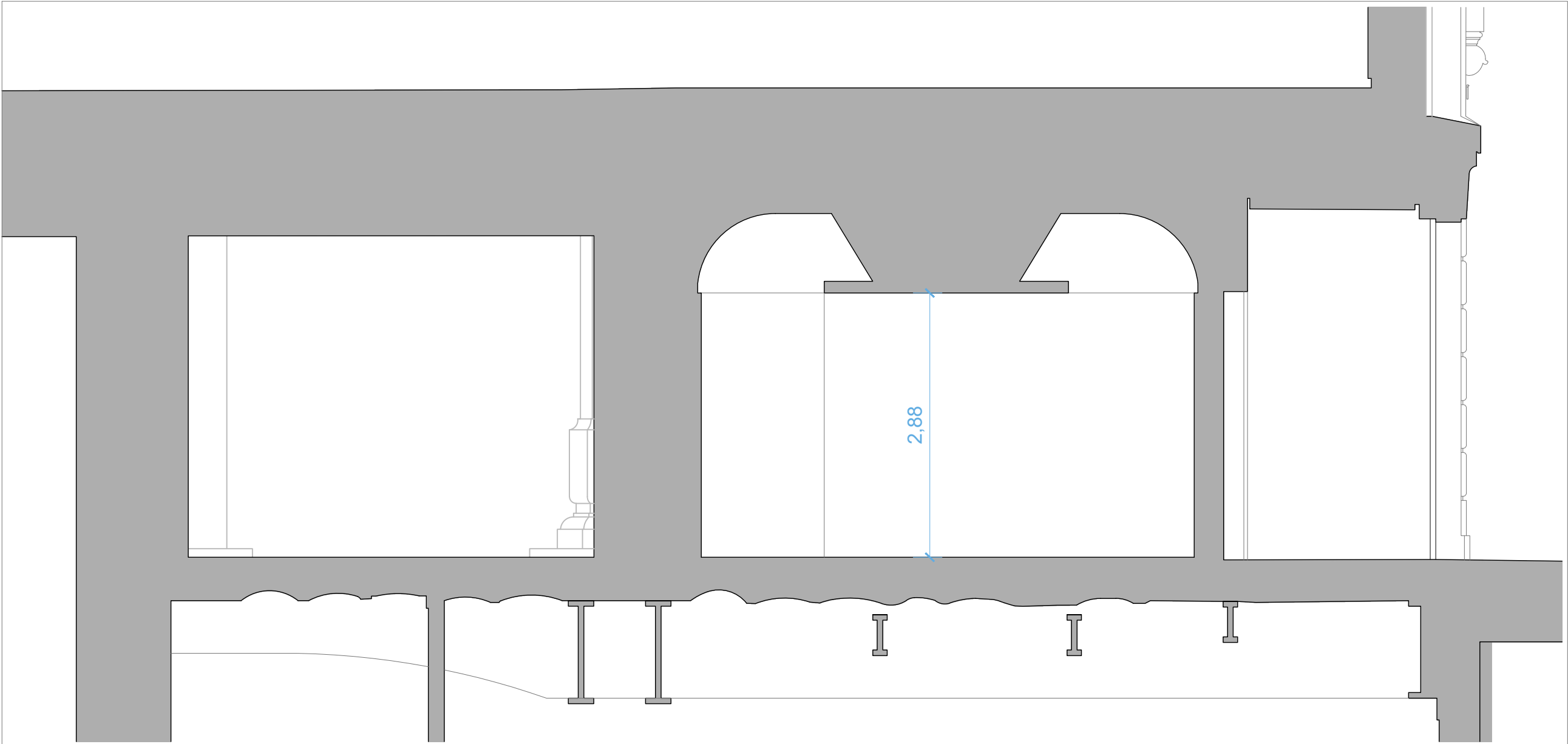


COUPE C

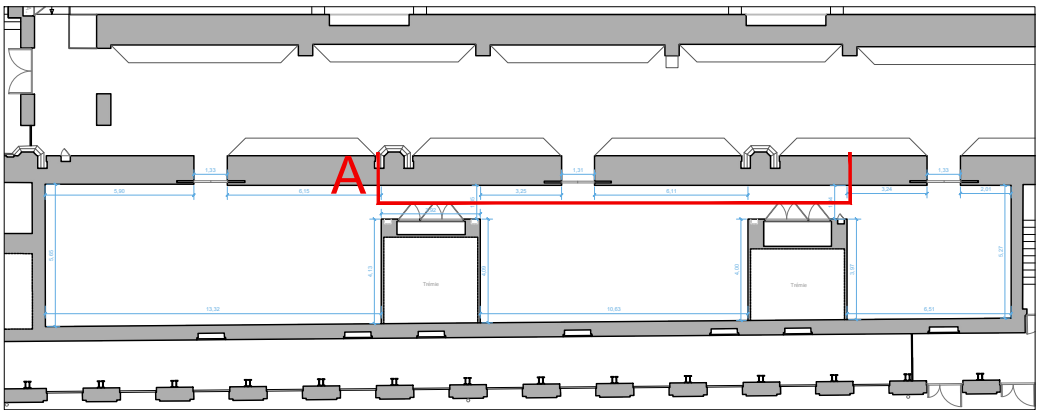




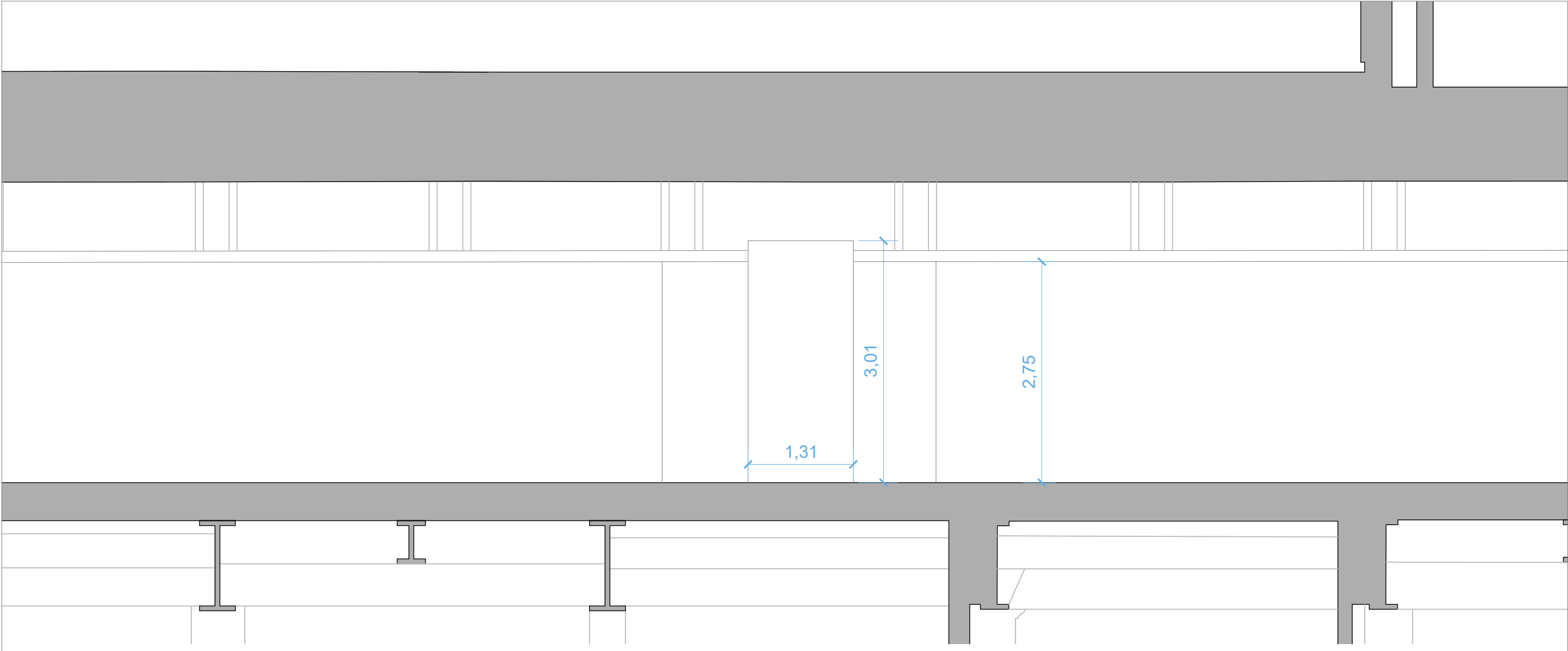
LOCALISATION



COUPE 4

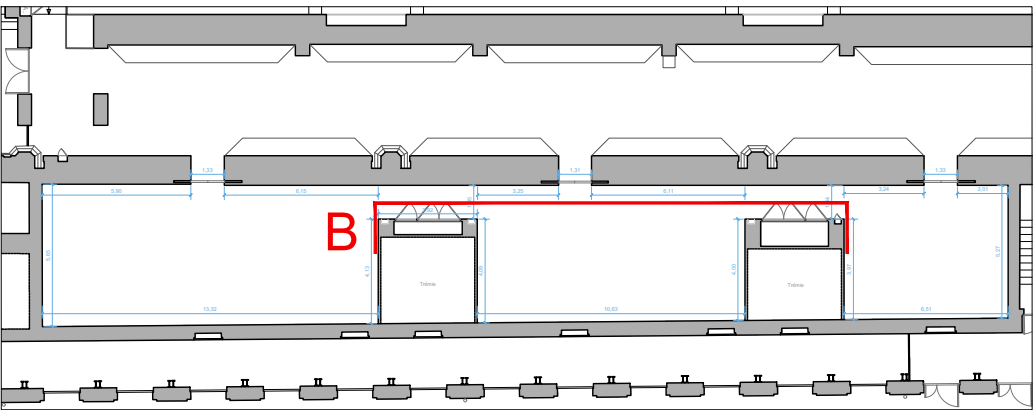


LOCALISATION

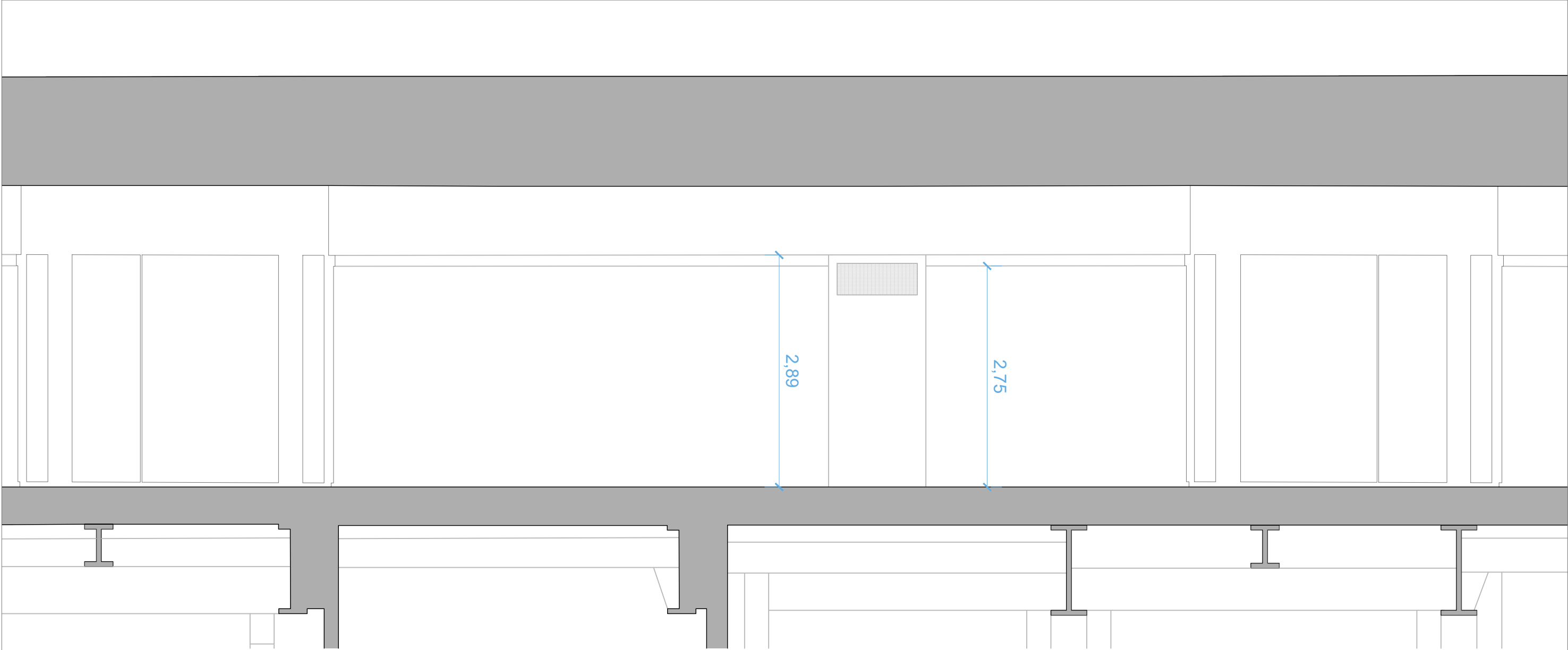


COUPE A

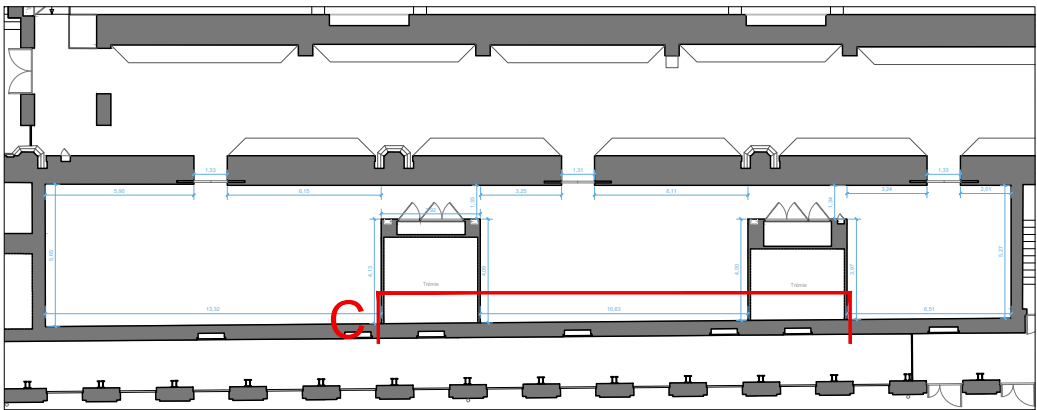




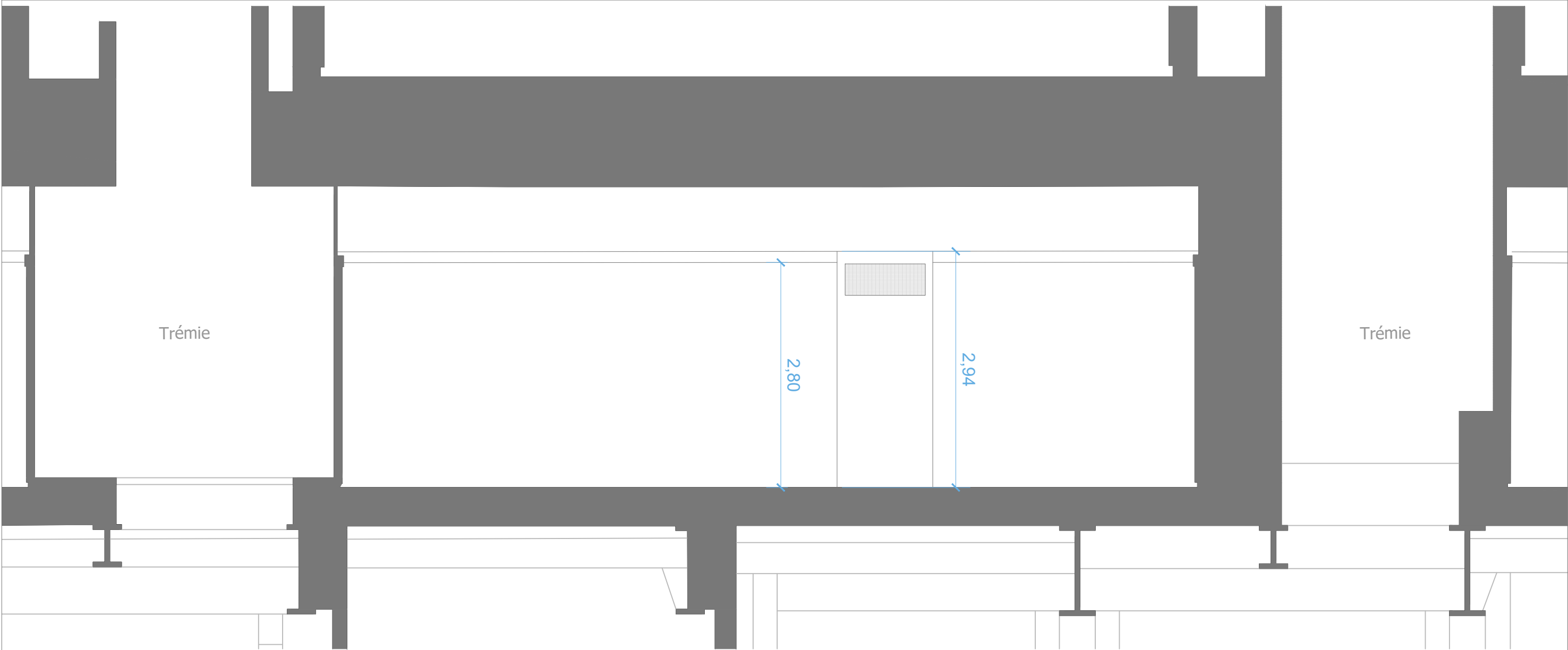
LOCALISATION



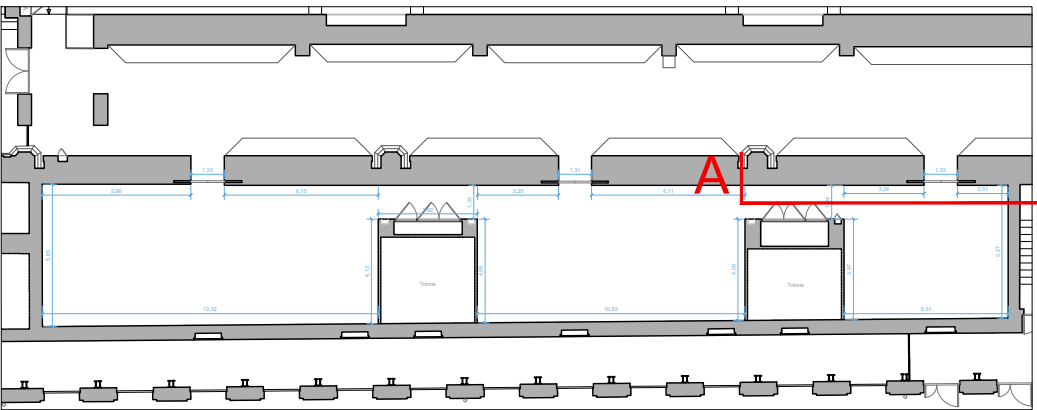
COUPE B



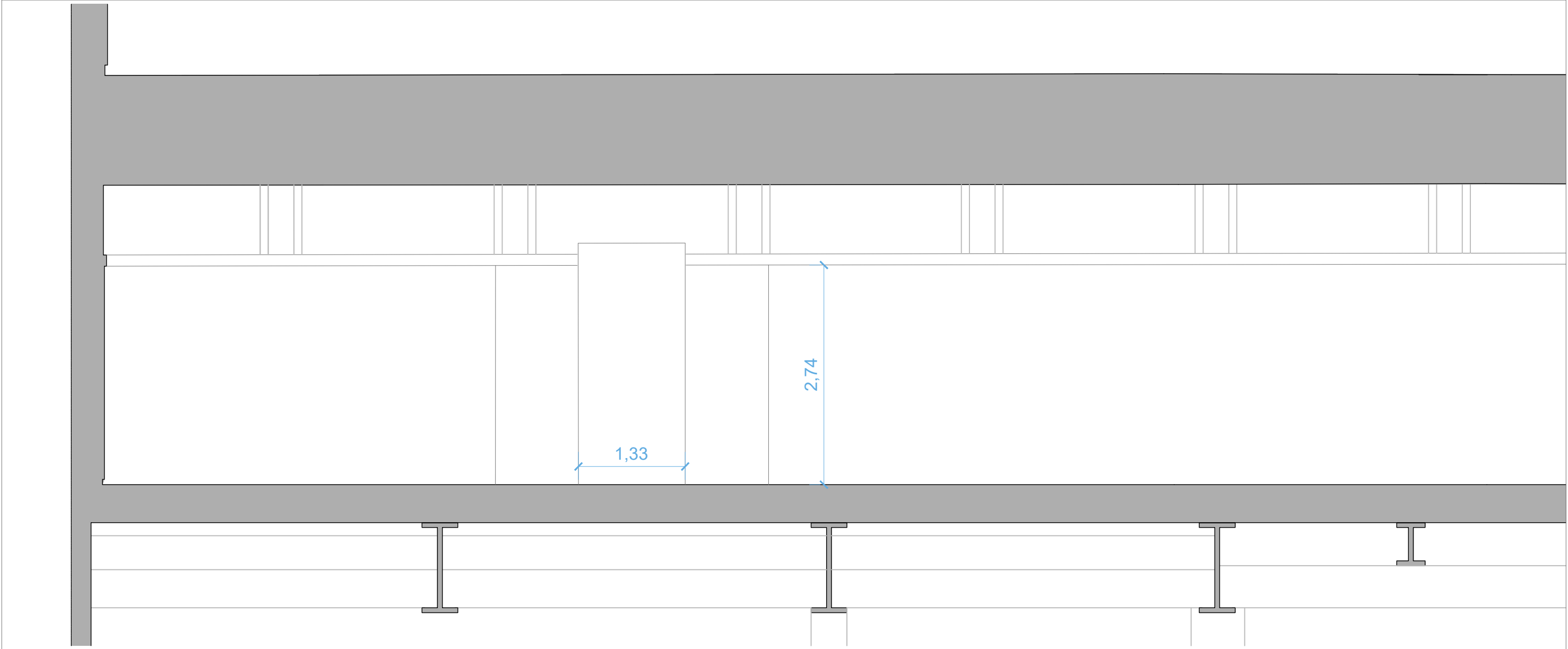
LOCALISATION



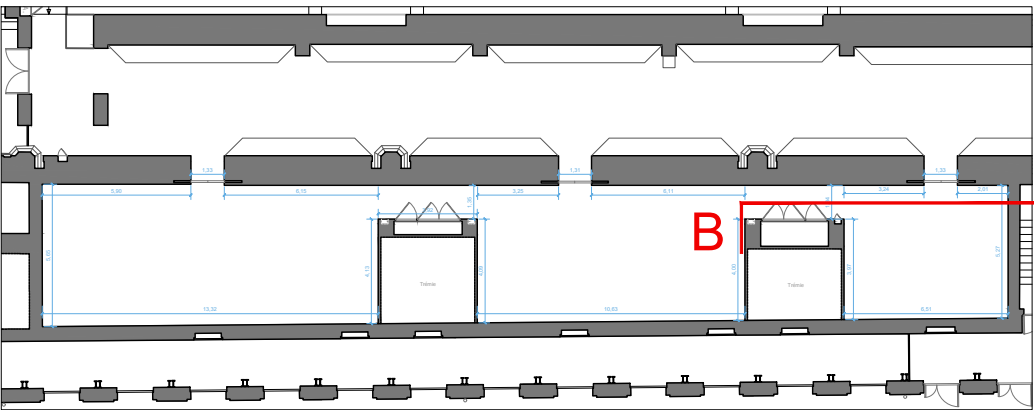
COUPE C



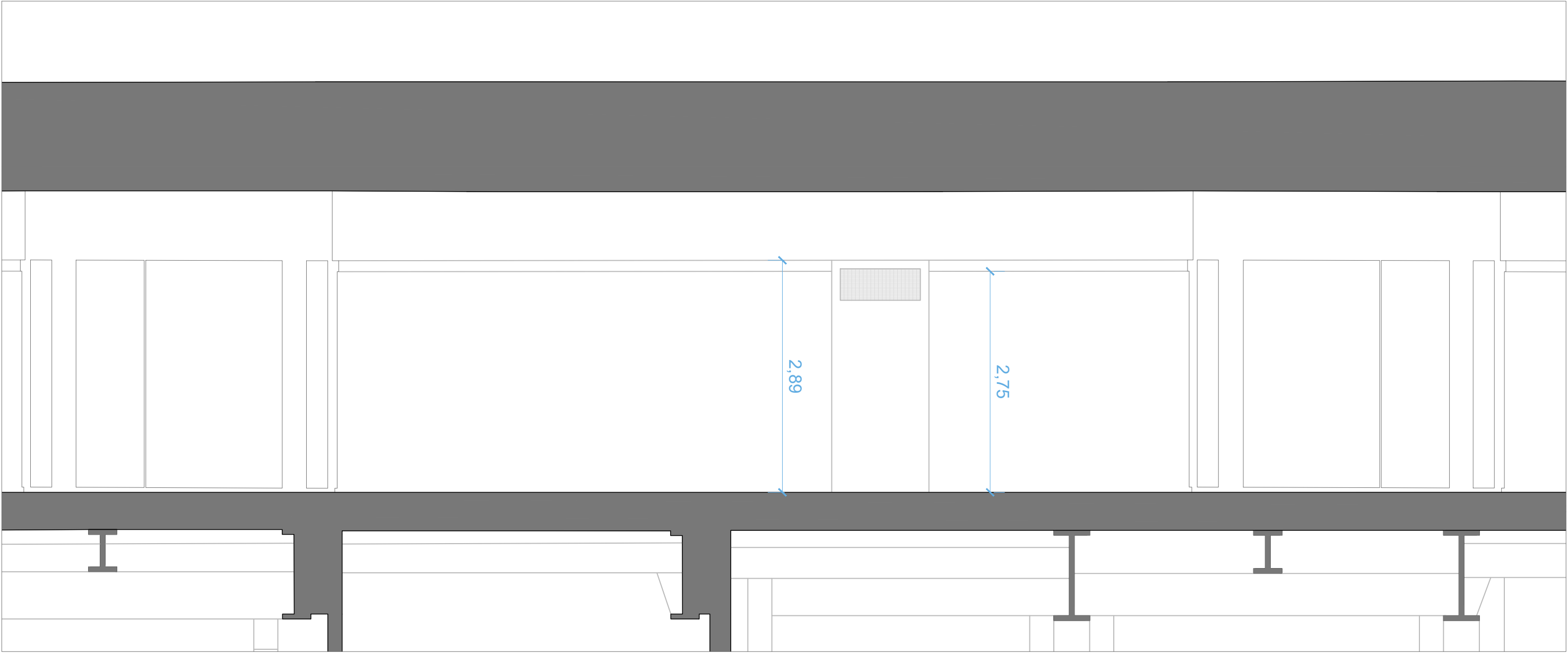
LOCALISATION



COUPE A

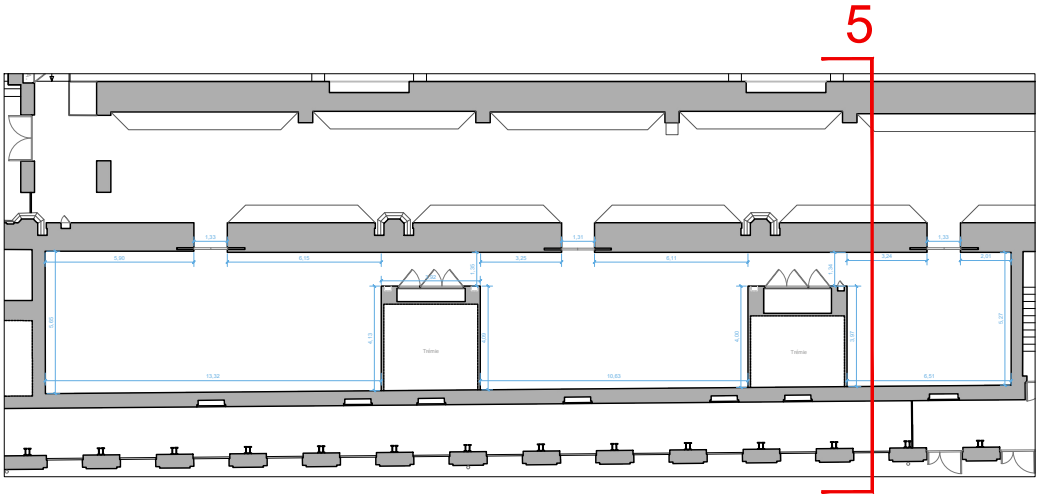


LOCALISATION

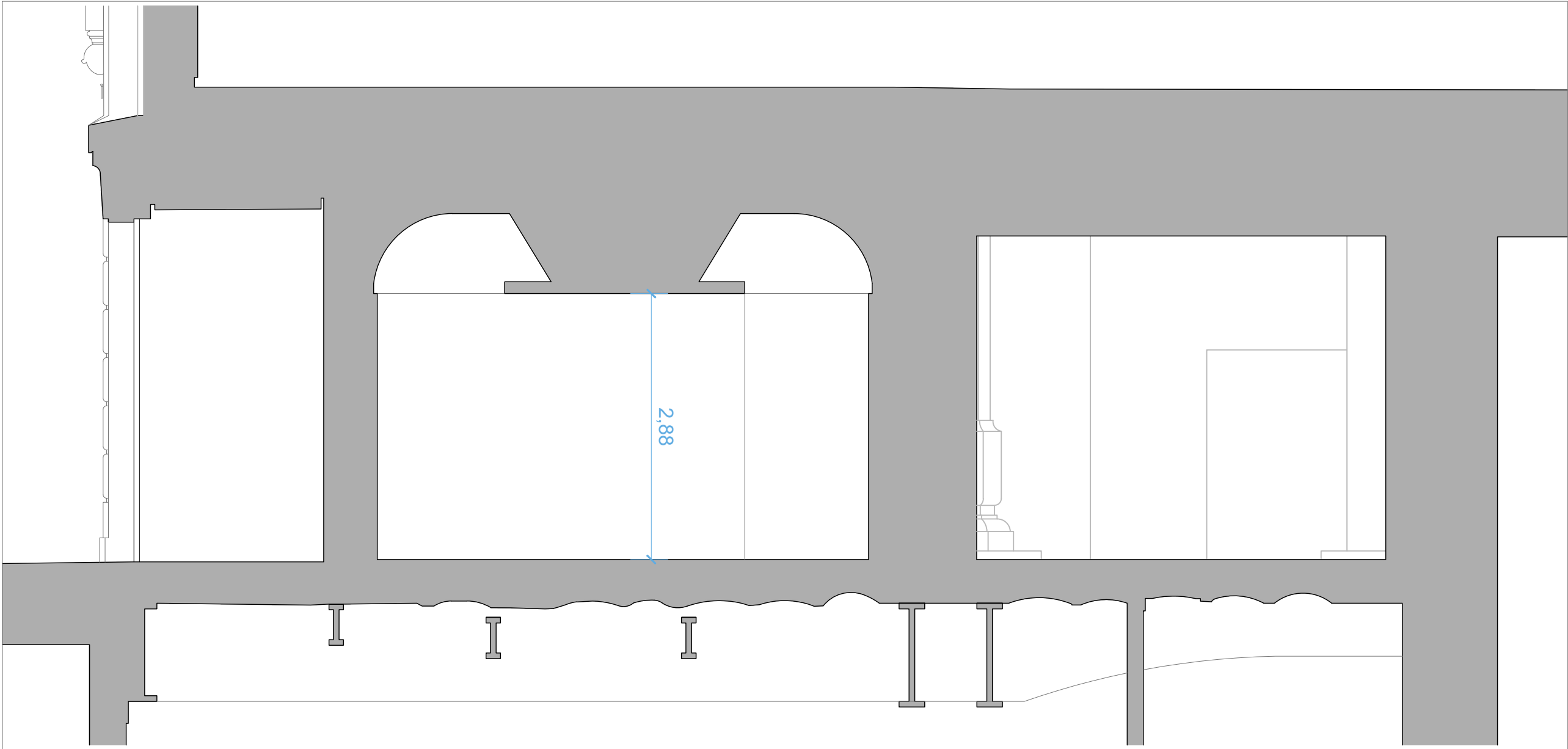


COUPE B





LOCALISATION



COUPE 5

This architectural elevation drawing shows a section of a building facade. The central feature is a large rectangular window topped with a semi-circular arch. A blue dimension line to the left of the window indicates a height of 2,88. To the left of this window is a smaller, plain rectangular window. To the right is another plain rectangular window. The facade is dark grey, and the sky above is light grey. Below the windows, there are decorative horizontal moldings and vertical elements. The drawing is a technical representation of a building's exterior.